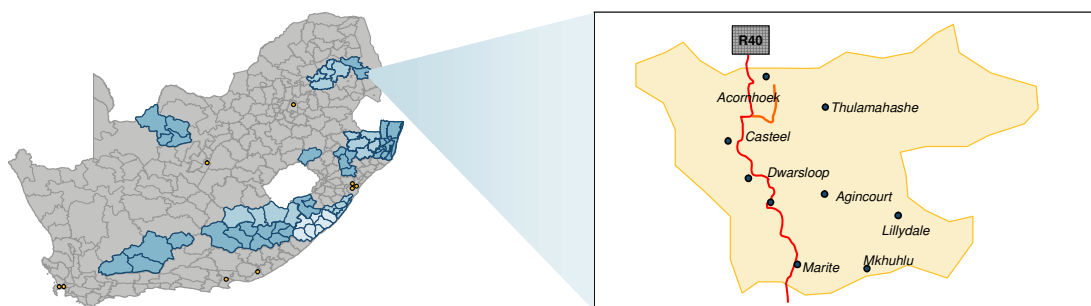


# Economic snapshot: Bushbuckridge, Mpumalanga



## Base data (Based on the Stats SA 2001 Census, unless indicated otherwise)

<i>Population</i>	499,054	<i>Rural population</i>	100%
<i>Employment rate</i>	14% (Average for rural nodes: 15%; average for SA: 33%)	<i>Min Grade 12 education</i>	18% of population aged 20+
<i>Potential labour pool*</i>	53% of total population	<i>Access to electricity</i>	79% of households (average for rural nodes: 43%; average for SA: 70%)
<i>GDP per capita</i>	R 5,414 (Quantec)		

\* Percentage population aged 15 to 64

## Private sector performance: Key sector overview

**Retail** After government, the key economic sector in this node is retail, which contributes some 15% to GDP and employs 17% of the economically active population. Retail activity is concentrated, in particular, around Acornhoek, in larger town and informal traders along the R40. Most major national brands (especially home-related such as furniture and building materials) are represented. This sector is heavily reliant on the large local population, and on government expenditure and employment.

**Agriculture** Very limited commercial farming currently takes place in Bushbuckridge; the sector contributes only 2% to GDP and 8% to employment. A large number of households farm for subsistence purposes or rely on small-scale agricultural production to make a living. Several orchards and plantations, formerly large employers in the node, currently lie dormant. Limited access to water, numerous land claims and inadequate land management has limited the viability of the agricultural sector. In addition, most small-scale farmers lack the skills, capital and equipment to farm on a commercial scale.

**Tourism** Catering and accommodation currently contribute some 2% to nodal GDP. While the area is adjacent to major tourism assets such as the Kruger National Park and Blyde River Canyon, there are no established tourist sites or facilities in Bushbuckridge. The Kruger2Canyon Biosphere Reserve has significant potential to create employment within the node. The focus should be on developing attractions within Bushbuckridge itself, in order to create further employment opportunities for local residents.

## Public sector performance: General observations

- The area is heavily dependent on public spending and State investment.
- The municipality faces a shortage of staff and a lack of suitable capacity, forcing it to rely heavily on consultants.
- There are concerns that cooperation and coordination between the district and local municipalities is not effective.
- The IDP provides a good overview of the area, but lacks specific information regarding projects, plans and budgets, in particular with respect to LED.

## Opportunities to facilitate economic growth

### Specific investment opportunities

Community input-based agro-processing	Potential exists to harvest fruit such as bananas, marulas and mangos
Tourism along Kruger National Park's direct access routes	The development of a tourist route linking the R536 (Hazyview – Skukuza) and the R531 (Klaserie – Orpen Gate) may attract additional tourists to the area
Clay mining and brick production	The mining of clay deposits along the western border of the node could create more than 500 jobs

### General actions

- Resolve land claims in order to free up land for development.
- Reactivate dormant commercial farms and promote the growth of small farming operations.
- Leverage the area's status as a biosphere to attract more tourists to Bushbuckridge.